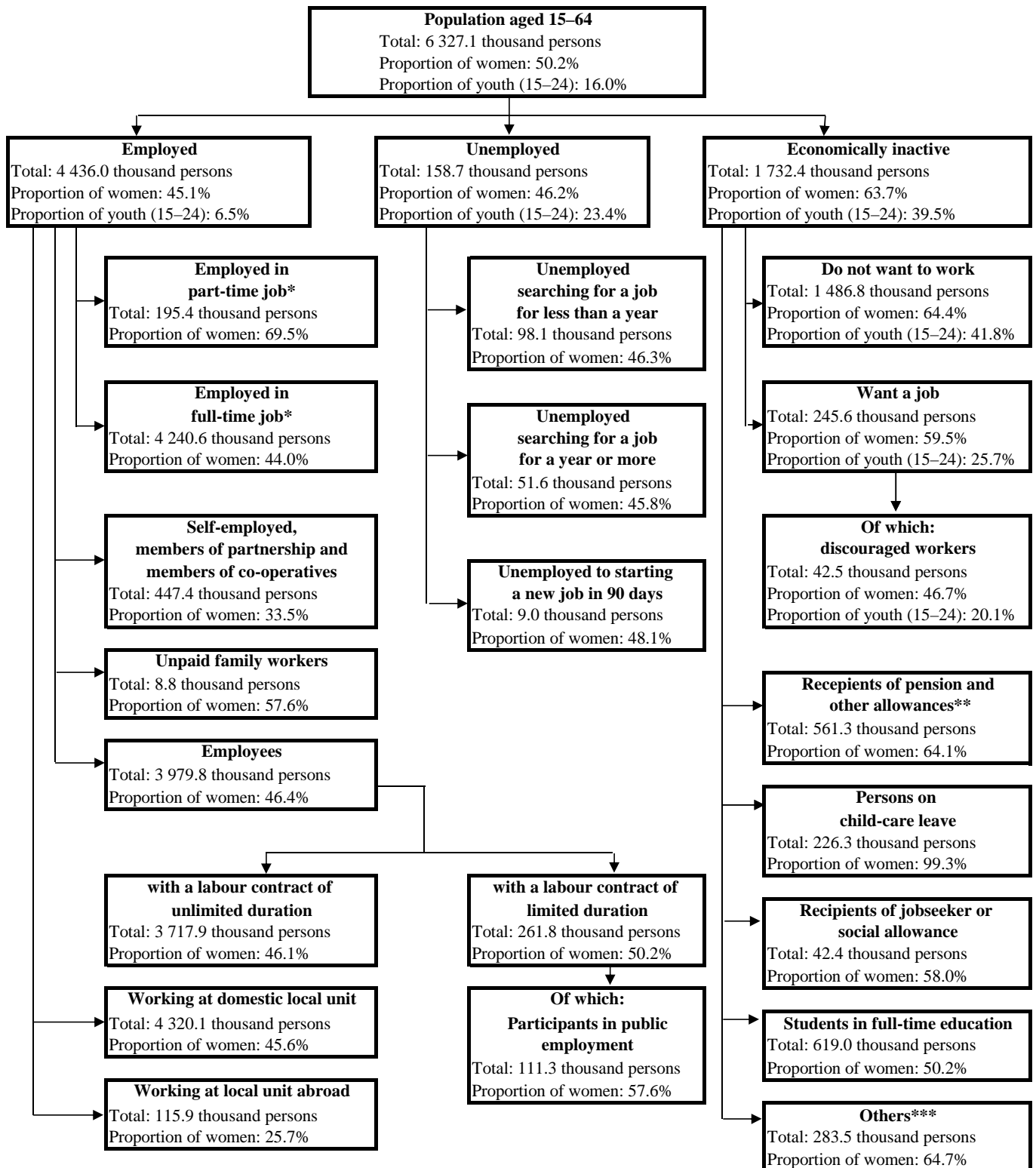


## 2.1.2. Labour market status of population aged 15–64, 2019



\* Self-classification.

\*\*Includes those who receive old-age pension, allowance for persons before reaching the legal retirement age, disability or rehabilitation allowance, widow's pension/allowance, parental pension, temporary widow's pension/allowance.

\*\*\*Includes those who receive orphan's provision or nursing allowance