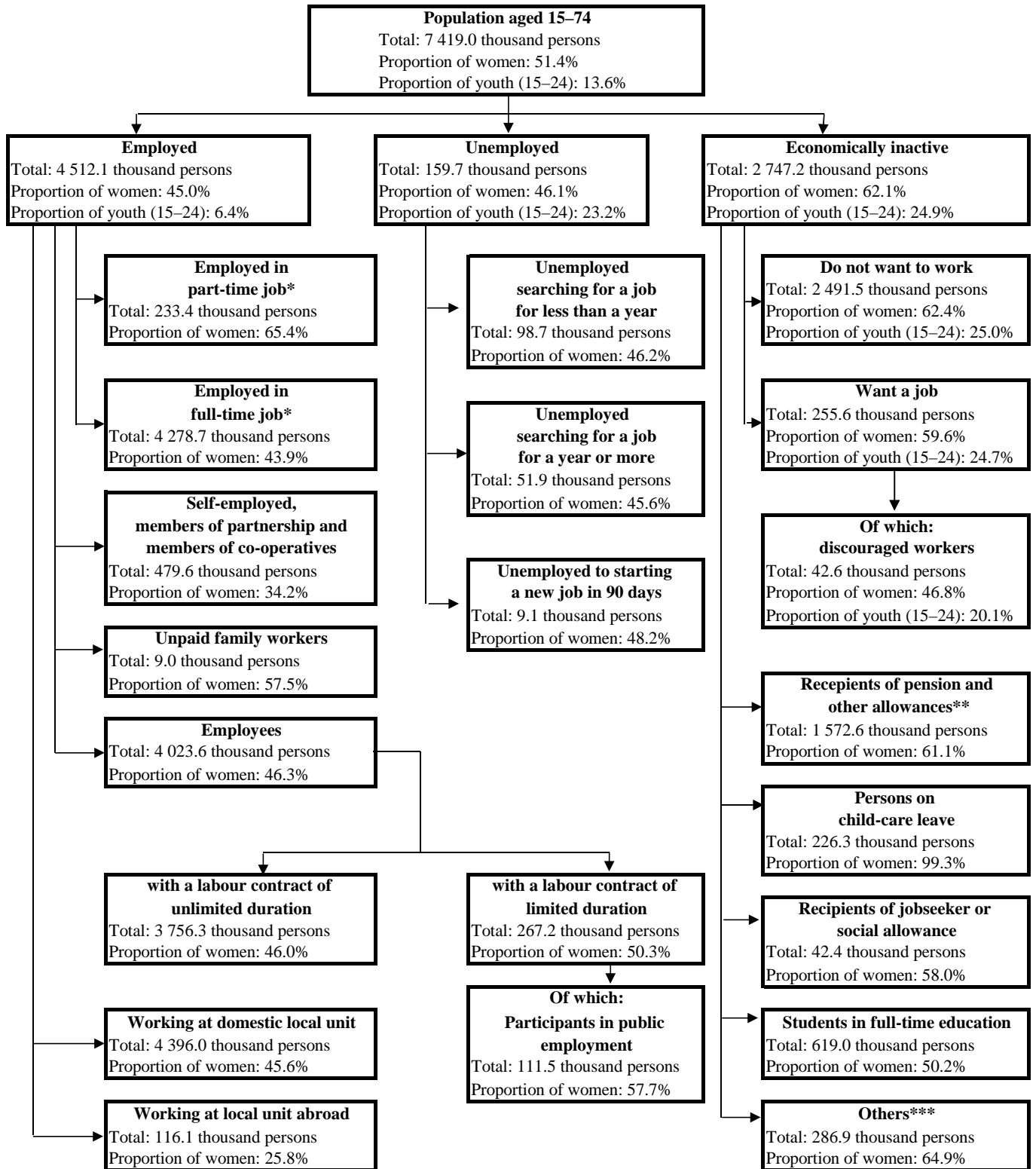


2.1.1. Labour market status of population aged 15–74, 2019



* Self-classification.

**Includes those who receive old-age pension, allowance for persons before reaching the legal retirement age, disability or rehabilitation allowance, widow's pension/allowance, parental pension, temporary widow's pension/allowance.

***Includes those who receive orphan's provision or nursing allowance