



# THE DEMOGRAPHIC SNAPSHOT, 2024

Resident population

**9.54**  
millions

▼ **-45.1** thousands

Change on previous year

Migration balance

**4.9**  
thousands

▼ **-22.9** thousands

Change on previous year



Live births

**77.5**  
thousands

▼ **-7.7** thousands

Change on previous year



Deaths

**127.5**  
thousands

▼ **-0.7** thousands

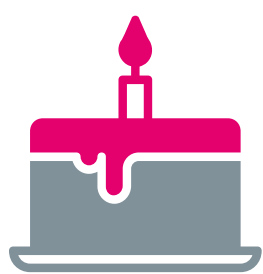
Change on previous year

Natural decrease

**50.0**  
thousands

▲ **+7.0** thousands

Change on previous year



Life expectancy at birth

**76.66**  
year

▲ **+0.12** year

Change on previous year



Total fertility rate

**1.38**  
children

▼ **-0.13** children

Change on previous year

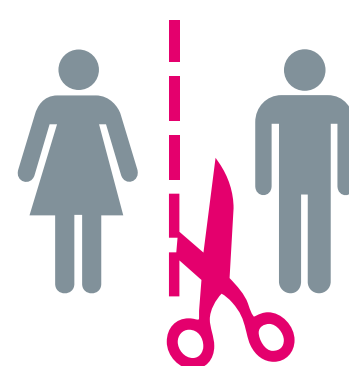


Marriages

**46.6**  
thousands

▼ **-3.6** thousands

Change on previous year



Divorces

**16.9**  
thousands

▲ **+0.1** thousands

Change on previous year